

SPATIAL AND TEMPORAL DYNAMICS OF COFFEE BERRY DISEASE AND COFFEE LEAF RUST IN MURANG'A

By

Alwora Getrude Okutoyi

Supervisors: Dr. E.K. Gichuru (KALRO-CRI)

Dr. Fabrice Pinard(CIRAD)

Dr. D. Miano(UON)

Prof. E. Mutitu(UON)

OBJECTIVES

Broad objective

- To promote sustainable coffee production by enabling management of coffee diseases through establishment of their distribution and status.

Specific objectives

- To determine the spatial and temporal distribution, severity and incidence of Coffee Berry Disease and Coffee Leaf Rust in relation to altitude, temperature and precipitation.
- To determine the effects of shade on the incidence and progression of Coffee Berry Disease and Coffee Leaf Rust

MATERIALS AND METHODS

Site description

- The study was carried out in Murang'a County in Central Kenya. 34 farms planted with susceptible coffee varieties and have no history of chemical control were identified

Data collection

- Ten trees were randomly selected in each of the 34 farms
- Data on CLR and CBD was recorded on two branches one at the top canopy and another at the mid canopy of the coffee bush
- MET data was obtained from the Kenya Meteorological Services

MATERIALS AND METHODS

Distribution of disease

- The presence or absence of the disease was scored in all the farms visited

Disease incidence

- The percentage of the infected bushes per farm

Disease prevalence

- The percentage of the farms with the disease

Data analysis

- The data was analyzed using SAS version 2.1 and COSTAT 2010

RESULTS AND DISCUSSION

○ YIELDS

The yields were significantly higher ($P \geq 0.05$) in the shaded plots than unshaded.

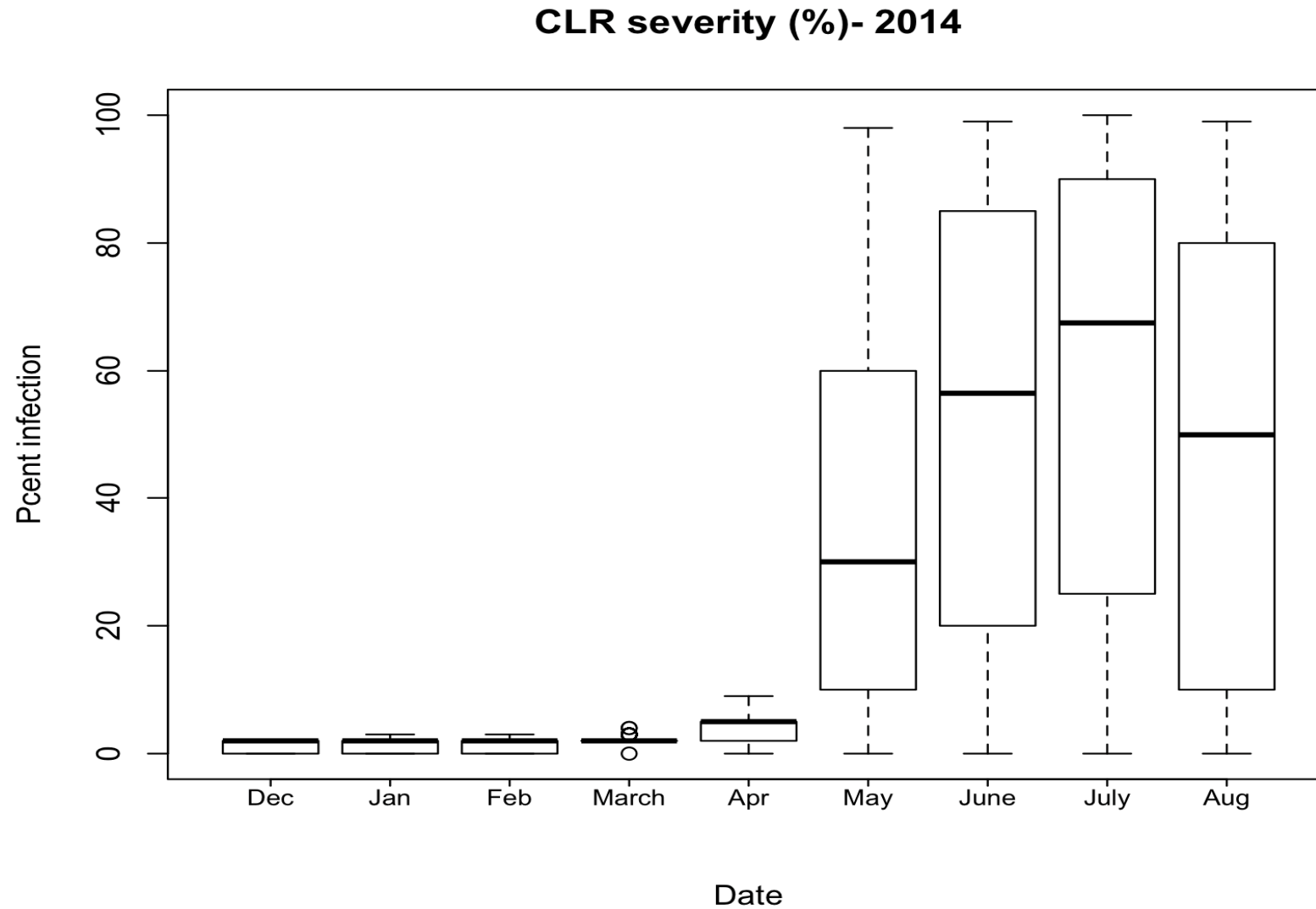
○ DISEASE INCIDENCE

Table 1: Percent Coffee leaf rust (CLR) and Coffee berry disease (CBD) incidence at different agro-ecological zones

| ECO ZONE Altitude | % CLR INCIDENCE | % CBD INCIDENCE |
|----------------------|--------------------|--------------------|
| High | 23.2 b | 60.79 a |
| Medium | 70.8 a | 33.85 b |
| Low | 87.7 a | 15.25 c |

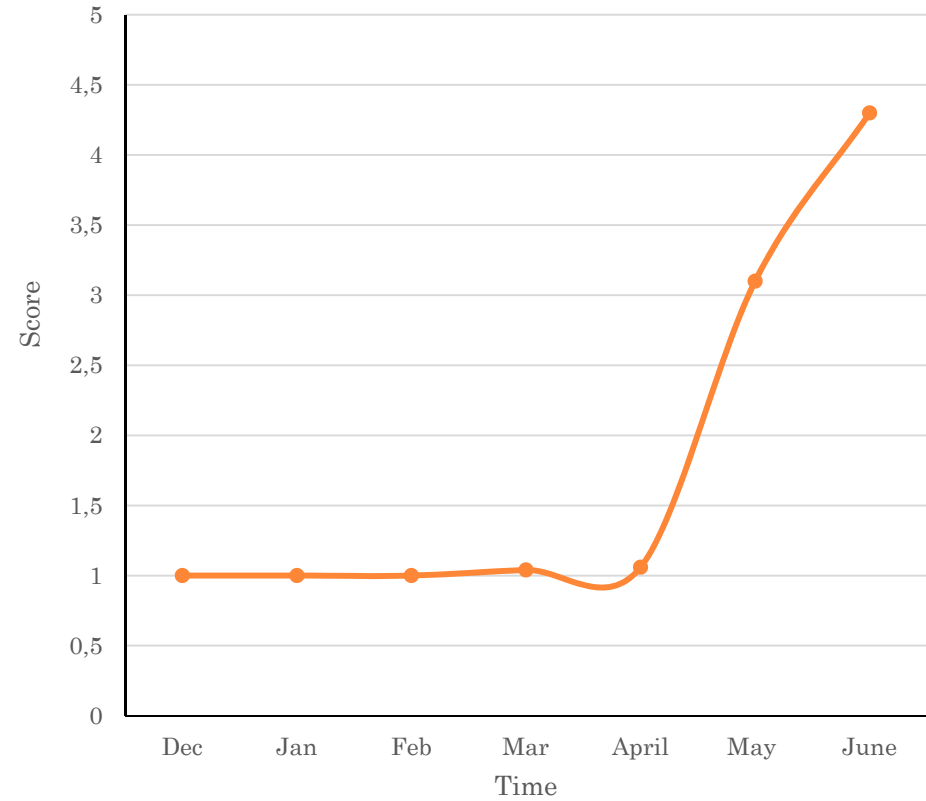
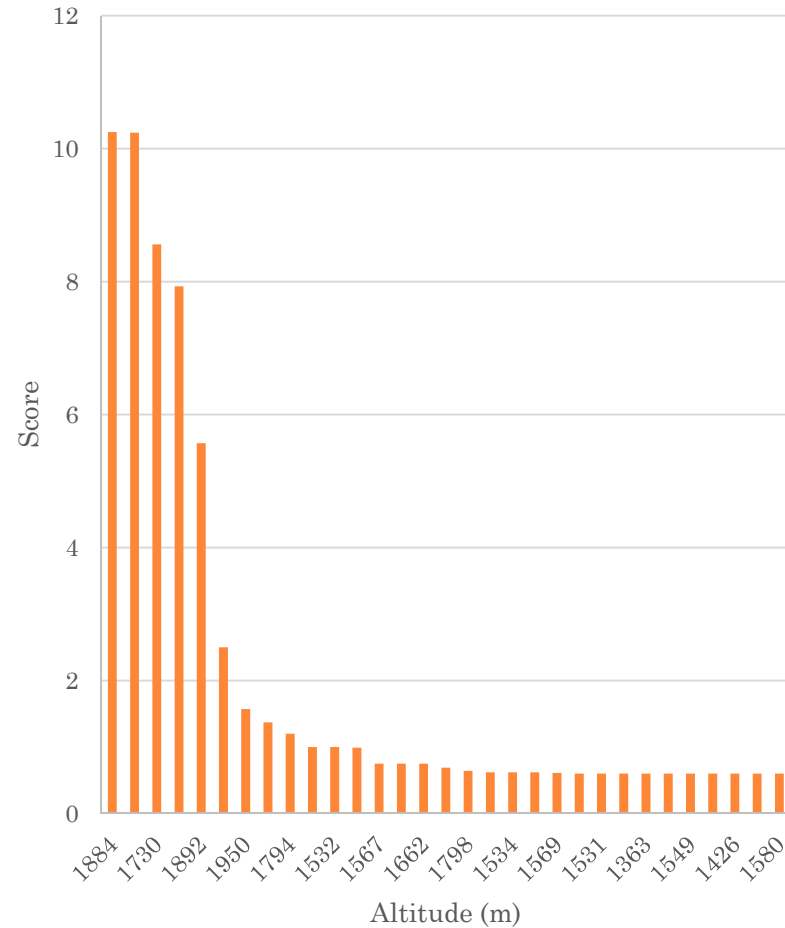
RESULTS AND DISCUSSION

Figure 1:



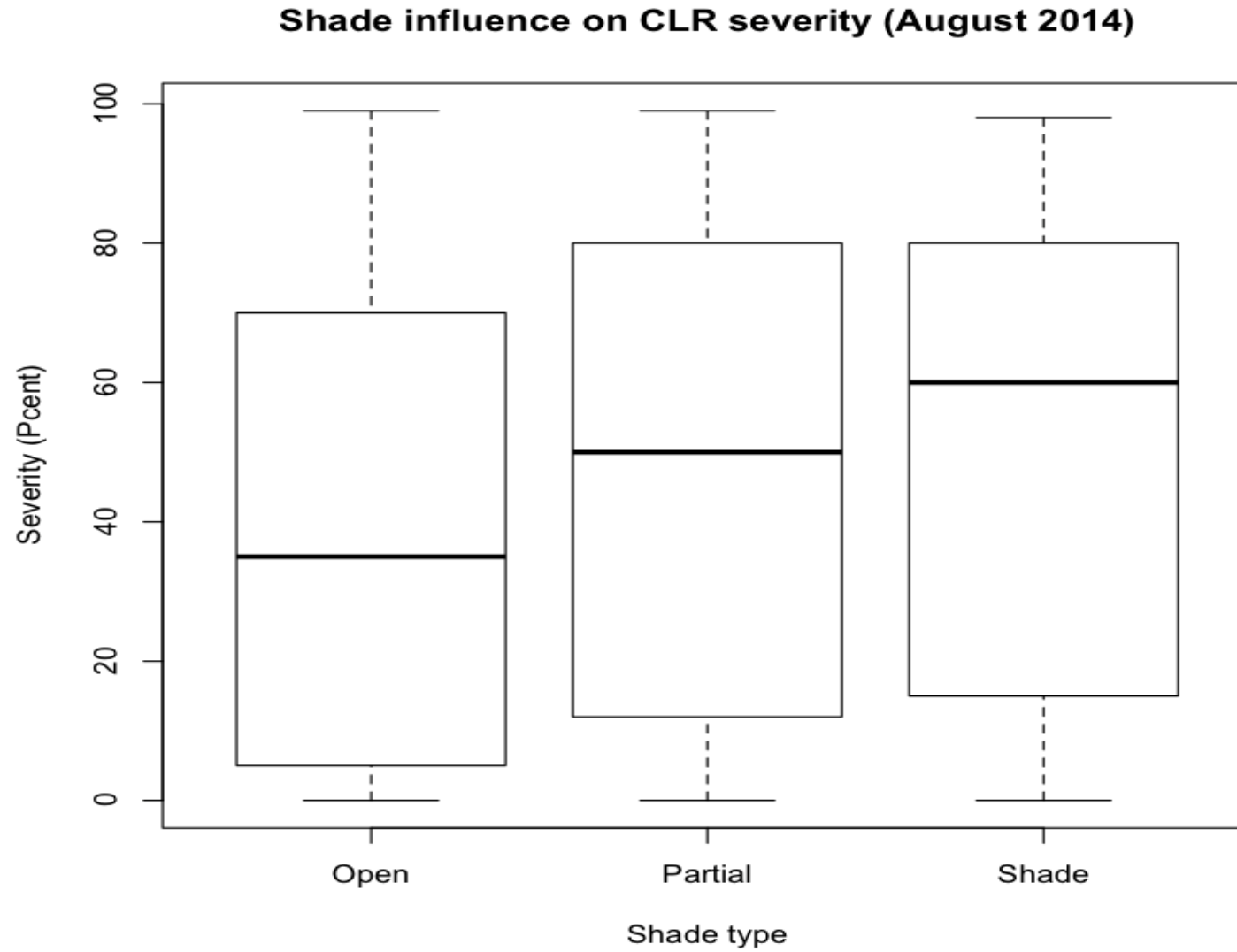
RESULTS AND DISCUSSION

Figure 2: CBD severity with altitude(left) and time (right)



RESULTS AND DISCUSSION

Figure 3:



STATUS

- The study was concluded in September 2014
- Data analysis is on going
- One publication has been made (Proceedings of the ASIC 2014 conference)



Plate 1: Tagging trees and braches

1/5/2015 PROPOSAL PRESENTATION



Plate 2:recording

1/5/2015 PROPOSAL PRESENTATION